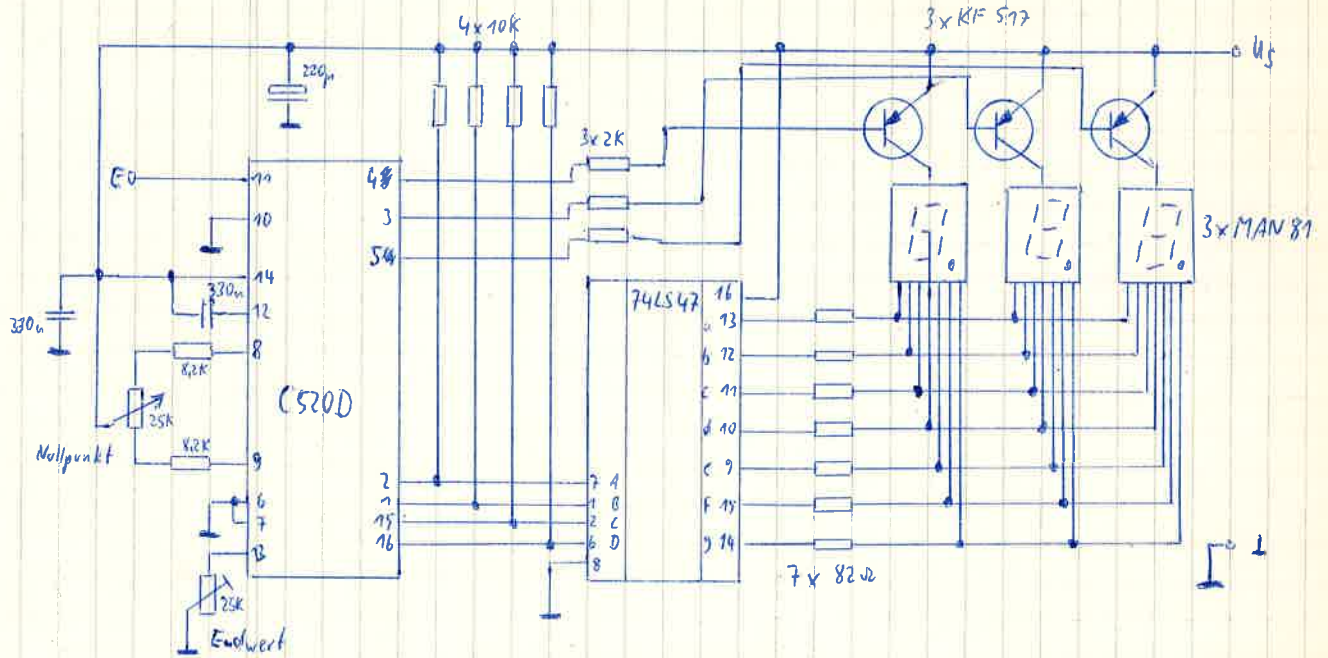


Analog-Digital-Umsetzer mit Anzeige



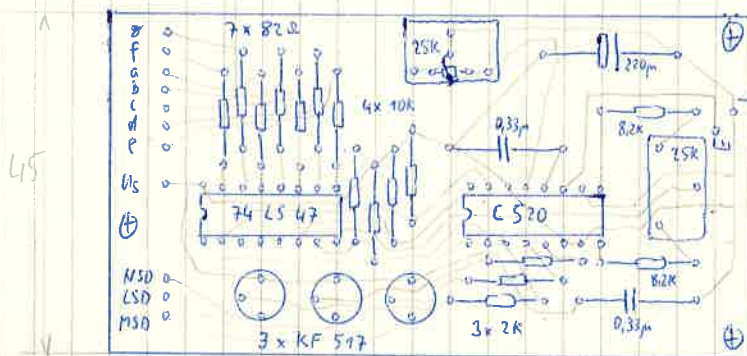
$U_E = -99 \dots + 999 \text{ mV}, I_E = 110 \text{ mA}$

$U_S = +5 \text{ V}, I \approx 150 \text{ mA}$

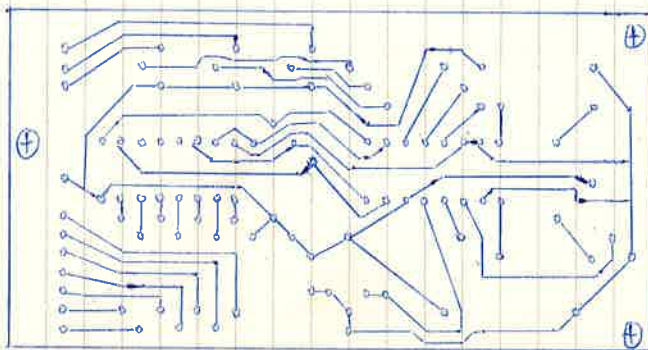
Vorzeichen - =

Überlauf + =

Überlauf - =



85



versetzt ∇ (FS) \uparrow